



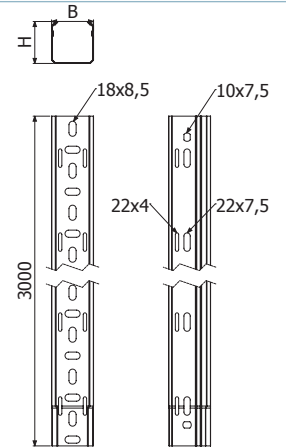
ERE 50X50



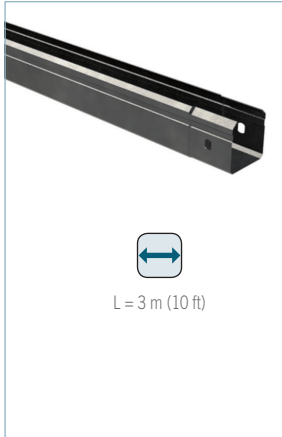
L = 3 m (10 ft)

	B		H		GS		GC	
	mm	inch	mm	inch	REF.	kg/m	REF.	kg/m
ERE 50X50	50	2"	50	2"	2/10181	0,65	2/10182	0,77

4/100 x B1 (2/4356 - GS // 2/6826 - GC).



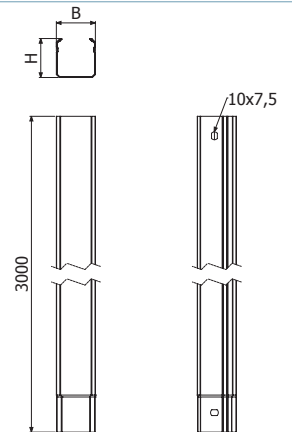
ERE-C 50X50



L = 3 m (10 ft)

	B		H		GS		GC	
	mm	inch	mm	inch	REF.	kg/m	REF.	kg/m
ERE-C 50X50	50	2"	50	2"	2/10183	0,69	2/10184	0,82

2/100 x B1 (2/4356 - GS // 2/6826 - GC).

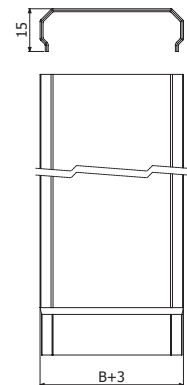


TERE 50

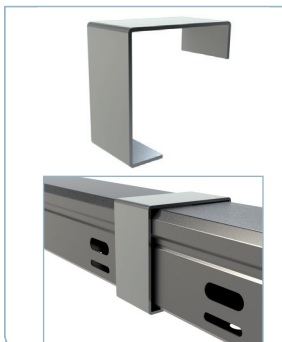


L = 3 m (10 ft)

	B		GS		GC	
	mm	inch	REF.	kg/m	REF.	kg/m
TERE 50	50	2"	2/10282	0,33	2/10283	0,43



PTER 50X50



	B		H		i304	
	mm	inch	mm	inch	REF.	kg/ud
PTER 50X50	50	2"	50	2"	2/8234	0,05



2 x PTER 50X50 => 1 x TERE 50

